

MIRO CUBE™ UV 365

DESIGNED BY THE BLACK TANK

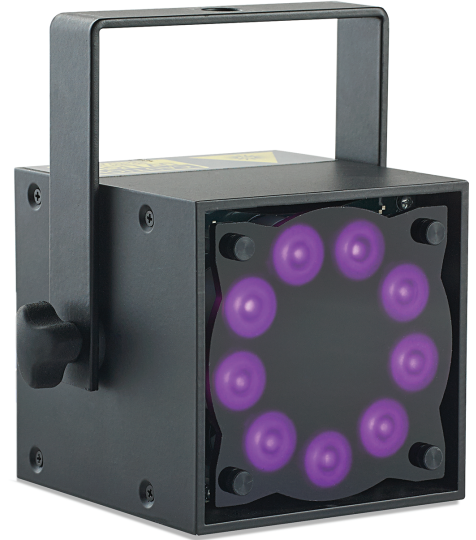


True UV LED Black Light

Because its LEDs are tuned to a narrow 365nm peak output, the Miro Cube UV365 does one thing extremely well — it gives an amazing glow to fluorescent scenery, make-up and plastics.

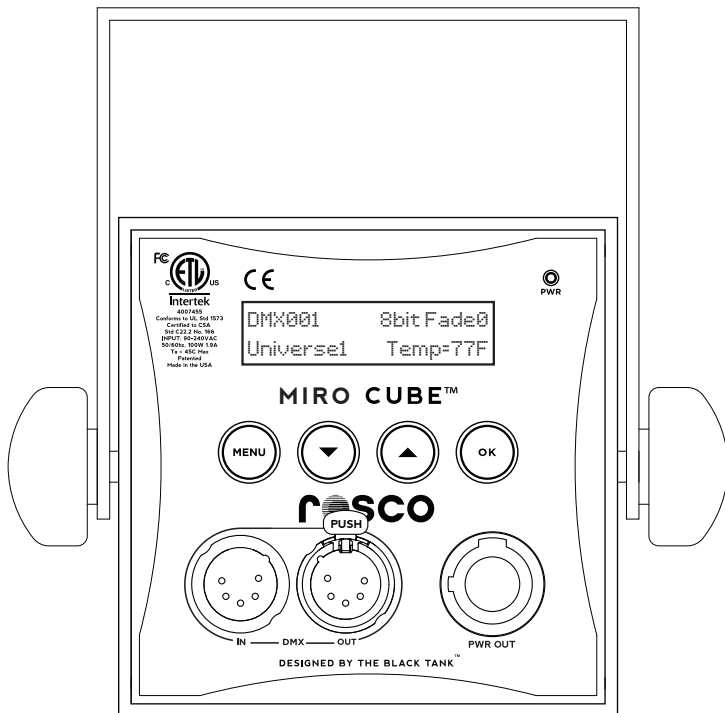
Ideally suited for theme parks, night clubs, casinos, museums and stage applications, the Miro Cube UV365 is the most powerful and most affordable UV fixture available to lighting professionals. Drawing just 50 watts, it outperforms conventional long throw fixtures that use 5 times the power, weigh 10 times more and need expensive lamp change every 1000 hours!

The Miro Cube UV365 offers an astounding energy output of 10,800mW, while still allowing for flicker-free dimming. The fixture comes with a narrow 10° optic and an optional 22° optic is available as an accessory for even greater beam control. This gives designers an ultra-long throw fixture with an option for lighting a wide expanse of fluorescent scenery.



Key Features

- True UV output creates stunning, bright black light effects on paint, makeup and other fluorescent materials
- Unique patented (US Patent No. 8,767,398) heat management system packs the most lumens into the smallest form factor
- No expensive power supply or ballasts - direct to mains power 90-240VAC 50/60 Hz
- Over 40 luminaires on a single 20A circuit
- Modular design easily configures in strips and arrays for maximum versatility
- Flicker-free dimming in 8 or 16 bit resolution
- Intuitive touch panel full-text interface for manual control
- Easily installed on standard line-voltage lighting track with optional yoke assembly, including full DMX track options
- 10° narrow beam optic included with the fixture. Optional 22° wide angle optic available as an accessory
- Novel “filament mode” mimics the delayed blackout glow of incandescent fixtures



MIRO CUBE™ UV 365

DESIGNED BY THE BLACK TANK



SPECIFICATIONS

Input Voltage:	90 - 240 VAC 50/60Hz
Power Consumption:	50 Watt at maximum output
Power Input:	Neutrik Powercon
LED:	9 x 365nm UV LED
Data (DMX):	5-pin XLR male/female
Output:	10,800mW
Color Range:	365nm
Operation:	DMX: 8 or 16 bit DMX512/Manual: Full Text LCD
Operating Temp.:	-13° to 113° F (-20° to 45° C)
Humidity:	0 - 95% non-condensing
Dimensions:	4in x 4in x 4.25 in (100mm x 100mm x 108mm)
Weight:	2.1 lbs (0.95kg)
Housing:	Powder Coated Aluminum Extrusion (1/8" wall)
Approvals:	FCC Class A Radiated and Conducted ETL / UL Standards 1573 and 8750 cETL / CSA C22.2 #166-M1983 CE / IP20 Rated

MIRO CUBE ACCESSORIES

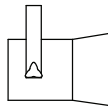
Top hat
1/2 Top Hat
Egg Crate Louver
Barn Doors (Set of 4)
Yokes & Mounting Hardware
10 Degree Narrow Beam Lens
22 Degrees Wide Beam Lens
Power Cable with Inline Switch

PART NUMBERS

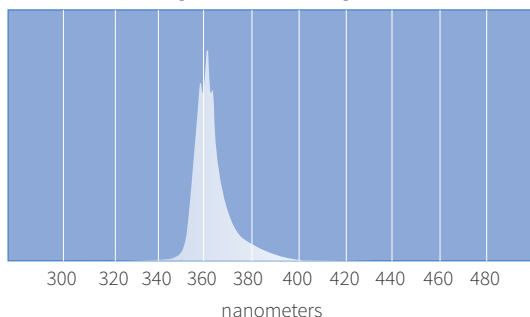
UV Black:	515 90050 1077
-----------	----------------

At Full Power

With Narrow Beam Lens



Spectral Output



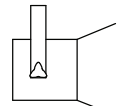
Illuminance at a Distance

	Absolute Irradiance	Beam Width Diameter
1.2m	426 W/cm ² /nm	.22m
1.8m	190 W/cm ² /nm	.32m
2.4m	100 W/cm ² /nm	.42m
3.0m	62 W/cm ² /nm	.50m
3.6m	44 W/cm ² /nm	.62m

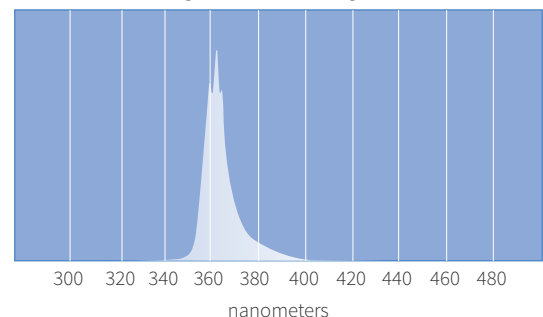
Beam Spread: 10°

At Full Power

With Wide Beam Lens



Spectral Output



Illuminance at a Distance

	Absolute Irradiance	Beam Width Diameter
1.2m	56 W/cm ² /nm	.46m
1.8m	22 W/cm ² /nm	.72m
2.4m	12 W/cm ² /nm	.92m
3.0m	7 W/cm ² /nm	1.22m
3.6m	5 W/cm ² /nm	1.52m

Beam Spread: 22°